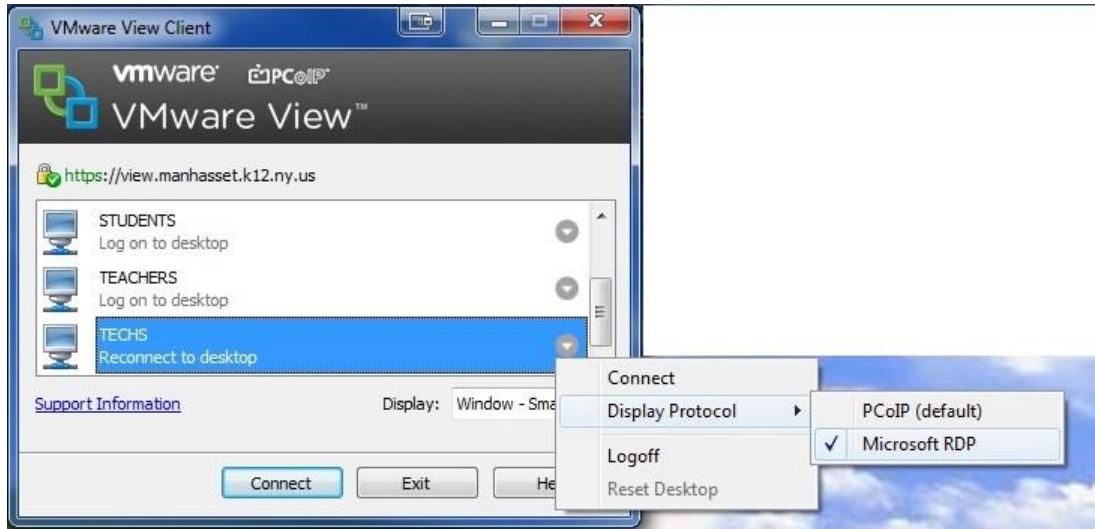


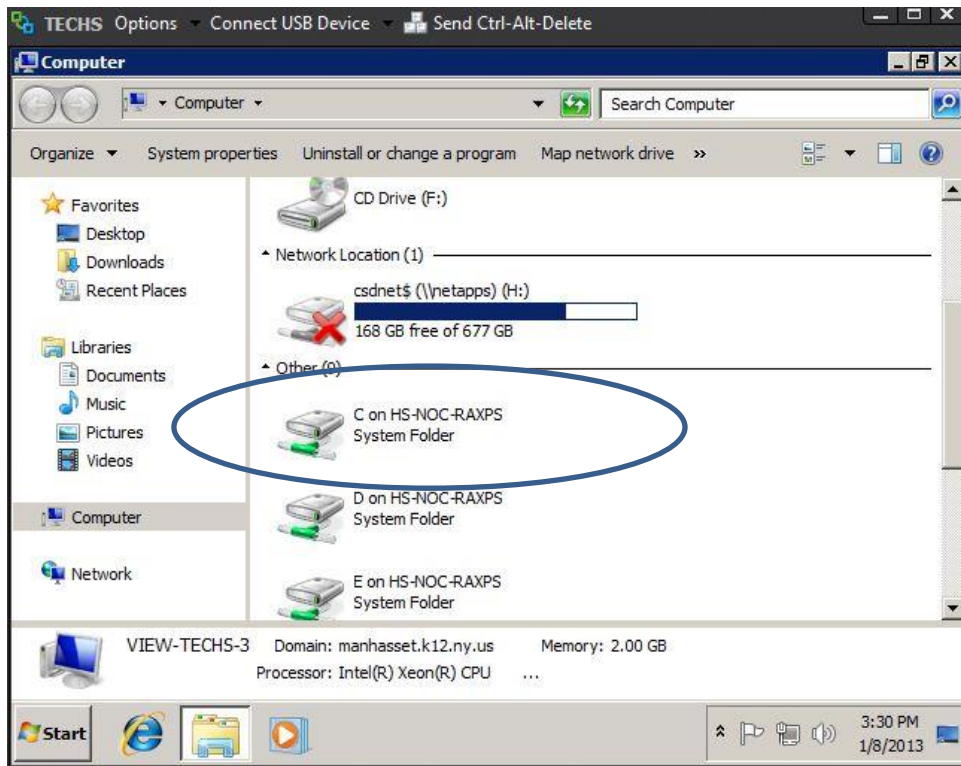
How To Transfer Files Between VMware View and Local Desktop

Using RDP Connection

1. Log into VMware View with your Manhasset login, before selecting your desktop, Teachers/Admins/Students select the small arrow next to the name.
2. Go to Display Protocol, and select "Microsoft RDP".



3. Once in VMware View, go to Start, then Computer. Under OTHER you will see your local computer drive (C drive, flash drives, etc). Then just drag the files from your local computer to your Home Directory in either direction.



REMEMBER- When done transferring files and using the VMware View session, switch the display connection back to PCoIP for a better user experience.